

> WM D22

B&C DNM STARLIGHT /MEN



MEDIUM FIT

Men's slub sweatshirt with raglan sleeves

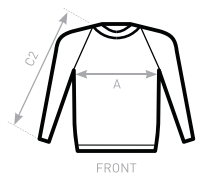
- Vintage look (Slub yarn)
- French Terry
- Crew neck sweatshirt
- Raglan sleeves
- Collar, cuffs and bottom hem in 1x1 rib
- Modern cut
- Side seams



- 80% cotton - 20% polyester
- French Terry | Cotton/polyester slub yarn
- 280 g/m²
- S - M - L - XL - XXL
- 5 pcs/pack & 20 pcs/carton



**DU♂
CONCEPT**
with B&C DNM Starlight
/women



FRONT



BACK

SIZES [cm]

B&C DNM STARLIGHT /M. WM D22	XS	S	M	L	XL	XXL	XXXL
A HALF CHEST	-	50	53	56	59	61	-
B CENTER BACK LENGTH	-	67	69	71	73	75	-
C2 SLEEVE LENGTH (RAGLAN)	-	81,5	83	84,5	86	87,5	-

