

>TW S52

B&C ORCHID /WOMEN



PARADISE
COLLECTION



RELAXED FIT

Women's flattering short-sleeved T-shirt in Single Jersey

- Superior quality 110 g/m² Single Jersey with very soft hand feeling
- Short batwing sleeved T-shirt
- Folded raw edge sleeves fixed with topstitch
- Wide crew neck in front
- Deep drop back
- Collar with binding in self fabric
- Rounded bottom with slight step back hem
- Bottom binding in self fabric with gathering effect
- Side seams

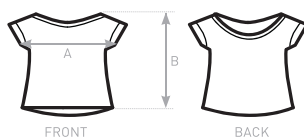


- 100% pre-shrunk ring-spun cotton
- Single Jersey
- 110 g/m²
- XS/S - M/L - XL/XXL
- 5 pcs/pack & 25 pcs/carton



DUO
CONCEPT

with B&C Flamingo /men



SIZES [CM]

B&C ORCHID /WOMEN TW S52	XS-S	M-L	XL-XXL
A BODY WIDTH SLEEVE EDGE TO SLEEVE EDGE	64	67	70
B BODY LENGTH	64	67	70

