

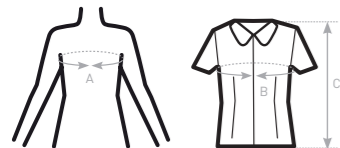


ADJUSTED FIT

- 100% cotton twill with Easy Care finish
- Soft feminine collar
- Cross stitched mother-of-pearl effect buttons
- Folded hem sleeves
- Darts at bustline & back panel for a feminine shape
- Horizontal last buttonhole
- Curved bottom hem



- 100% **combed** cotton
  - Twill
  - 130 g/m<sup>2</sup> **EASY CARE**
  - XS > 4XL
  - 1 pc/pack & 10 pcs/carton
- 



SIZES [CM]

B&C SHARP SSL /W. SW T84	US	XS	S	M	L	XL	XXL	XXXL	4XL	5XL	6XL
A DRESS SIZE	FR 36 IT 40 EU 34 UK 8	38 42 36 10	40 44 38 12	42 46 40 14	44 48 42 16	46 50 44 18	48 52 46 20	50 54 48 22	-	-	-
B CHEST SIZE	CM	91	96	101	106	111	116	121	126	-	-
C CENTER BACK LENGTH	CM	65	66	67	68	69	70	71	72	-	-



PURE COTTON WOMEN'S SHORT SLEEVED  
EASY CARE TWILL SHIRT

