



ADJUSTED FIT

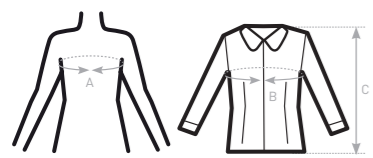
- Qualitative polycotton poplin with Easy Care finish
- Soft feminine collar
- Cross stitched mother-of-pearl effect buttons
- 2-button adjustable cuffs
 - a. Angular cuffs & thin square-shaped gauntlets
 - b. Additional cufflink buttonholes
- Darts at bustline & back panel for a feminine shape
- Horizontal last buttonhole
- Curved bottom hem



- 65% polyester - 35% **combed** cotton
- Poplin
- 115 g/m² = **EASY CARE**
- XS > 4XL
- 1 pc/pack & 10 pcs/carton



DUO CONCEPT
with B&C Smart LSL /men



SIZES [CM]

B&C SMART LSL /W. SW P63	US	XS	S	M	L	XL	XXL	XXXL	4XL	5XL	6XL
A DRESS SIZE	FR 36	38	40	42	44	46	48	50	-	-	-
	IT 40	42	44	46	48	50	52	54	-	-	-
	EU 34	36	38	40	42	44	46	48	-	-	-
	UK 8	10	12	14	16	18	20	22	-	-	-
B CHEST SIZE	CM 91	96	101	106	111	116	121	126	-	-	-
C CENTER BACK LENGTH	CM 65	66	67	68	69	70	71	72	-	-	-



DURABLE POLYCOTTON WOMEN'S LONG SLEEVED
EASY CARE POPLIN SHIRT

