



ADJUSTED FIT

- Fine 100% cotton poplin with **Easy Care** finish
- Soft feminine collar
- Cross stitched mother-of-pearl effect buttons
- 2-button cuffs
 - a. Straight cuffs & thin square-shaped gauntlets
 - b. French cuff option
- Darts at bustline & back panel for a feminine shape
- Horizontal last buttonhole
- Curved bottom hem



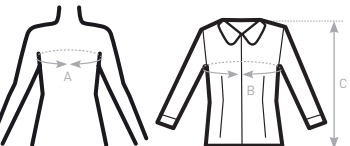
- 100% **combed** cotton
 - Poplin
 - 120 g/m² (white) - 125 g/m² (colour)
 - XS > 4XL
 - 1 pc/pack & 10 pcs/carton
-



DUO CONCEPT
with B&C Heritage LSL /men

SIZES [CM]

B&C HERITAGE LSL /W. SW P43		US	XS	S	M	L	XL	XXL	XXXL	4XL	5XL	6XL
A DRESS SIZE	FR	36	38	40	42	44	46	48	50	-	-	-
	IT	40	42	44	46	48	50	52	54	-	-	-
	EU	34	36	38	40	42	44	46	48	-	-	-
	UK	8	10	12	14	16	18	20	22	-	-	-
B CHEST SIZE	CM	91	96	101	106	111	116	121	126	-	-	-
C CENTER BACK LENGTH	CM	65	66	67	68	69	70	71	72	-	-	-



PURE COTTON WOMEN'S LONG SLEEVED EASY CARE
COMFORTABLE POPLIN SHIRT

