



**REGULAR FIT**

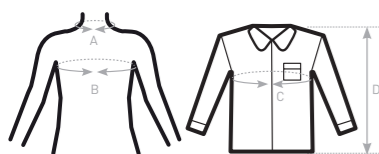
- 100% cotton twill with **Easy Care** finish
- Semi cut-away collar
- Cross stitched mother-of-pearl effect buttons
- 2-button adjustable cuffs
  - a. Angular cuffs & square-shaped gauntlets
  - b. Additional cufflink buttonholes
- The exclusive B&C Tie-Fix®
- Left chest pocket
- Back yoke with 2 overstitched side pleats
- Inside lap seams for perfect finish
- Horizontal last buttonhole
- Square-shaped bottom hem reinforcement
- Curved bottom hem



- 100% **combed** cotton
- Twill
- 130 g/m<sup>2</sup> **EASY CARE**
- S > 4XL
- 1 pc/pack & 10 pcs/carton



**DUO CONCEPT**  
with B&C Sharp LSL /women



**SIZES [CM]**

B&C SHARP LSL /M. SM T81	US	S	M	L	XL	XXL	XXXL	4XL	5XL	6XL
A COLLAR TO FIT	CM 37/38	39/40	41/42	43/44	45/46	47/48	49/50	-	-	-
	INS 14,5 / 15	15,5	16/16,5	17/17,5	18	18,5/19	19,5	-	-	-
B CHEST TO FIT	CM 92/97	97/102	102/107	107/112	112/117	117/122	122/127	-	-	-
	INS 36/38	38/40	40/42	42/44	44/46	46/48	48/50	-	-	-
C CHEST SIZE	CM 112	117	127	137	142	152	157	-	-	-
D CENTER BACK LENGTH	CM 80	81	83	85	86	88	89	-	-	-



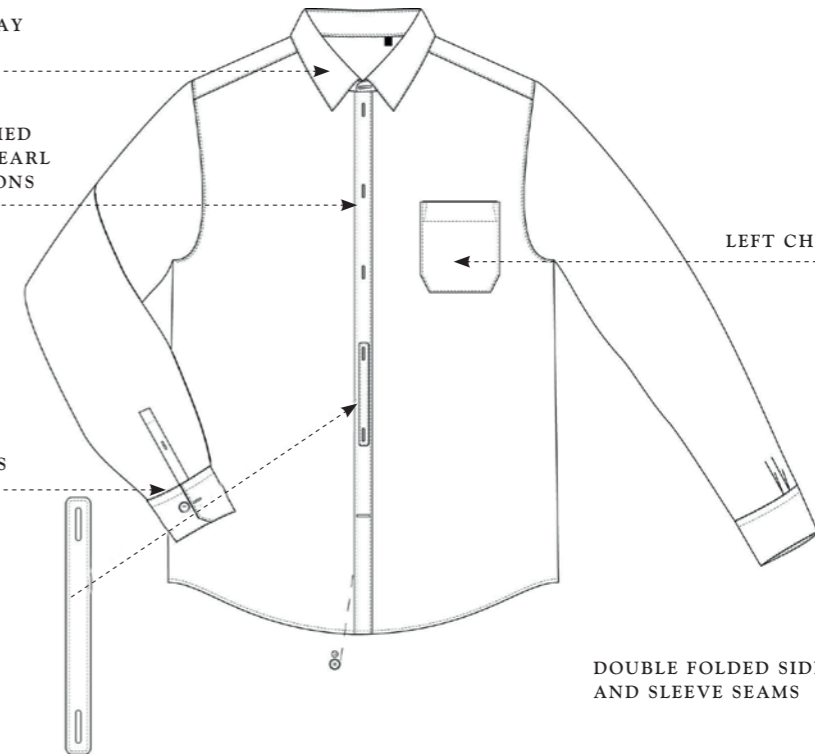
**PURE COTTON MEN'S LONG SLEEVED  
EASY CARE TWILL SHIRT**

SEMI CUT-AWAY COLLAR

CROSS STITCHED MOTHER-OF-PEARL EFFECT BUTTONS

LEFT CHEST POCKET

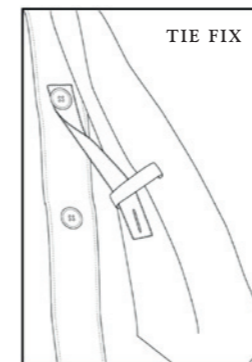
ANGULAR 2-BUTTON ADJUSTABLE CUFFS WITH ADDITIONAL CUFFLINK BUTTONHOLES



DOUBLE FOLDED SIDE AND SLEEVE SEAMS

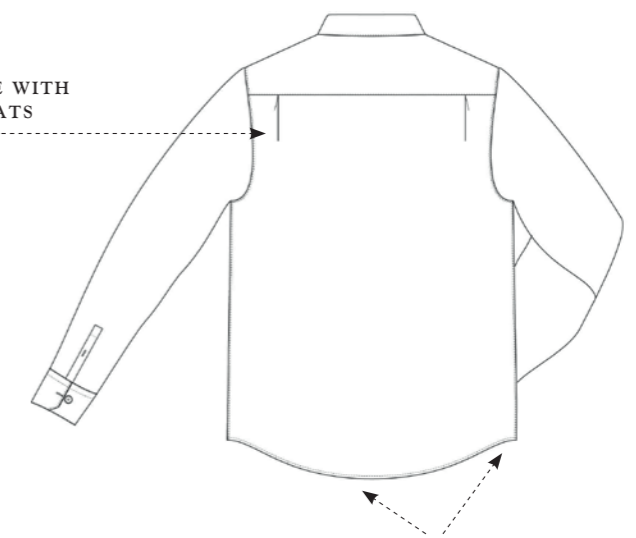


**B&C TIE FIX**



TIE FIX

BACK YOKE WITH 2 SIDE PLEATS



CURVED BOTTOM HEM WITH SQUARE-SHAPED SIDE REINFORCEMENT