



REGULAR FIT

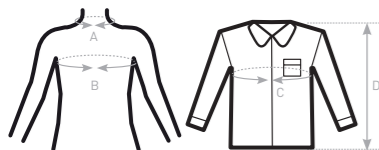
- Qualitative polycotton poplin with Easy Care finish
- Cut-away collar
- Cross stitched mother-of-pearl effect buttons
- 2-button adjustable cuffs
 - a. Angular cuffs & square-shaped gauntlets
 - b. Additional cufflink buttonholes
- Left chest pocket
- Back yoke with 2 overstitched side pleats
- Inside lap seams for perfect finish
- Horizontal last buttonhole
- Curved bottom hem



- 65% polyester - 35% **combed** cotton
- Poplin
- 115 g/m² = **EASY CARE**
- S > 4XL
- 1 pc/pack & 10 pcs/carton



DUO CONCEPT
with B&C Smart LSL /women



SIZES [CM]

B&C SMART LSL /M. SM P61	US	S	M	L	XL	XXL	XXXL	4XL	5XL	6XL
A COLLAR TO FIT	CM 37/38	39/40	41/42	43/44	45/46	47/48	49/50	-	-	-
	INS 14,5 / 15	15,5	16 / 16,5	17 / 17,5	18	18,5 / 19	19,5	-	-	-
B CHEST TO FIT	CM 92/97	97/102	102/107	107/112	112/117	117/122	122/127	-	-	-
	INS 36/38	38/40	40/42	42/44	44/46	46/48	48/50	-	-	-
C CHEST SIZE	CM 112	117	127	137	142	152	157	-	-	-
D CENTER BACK LENGTH	CM 80	81	83	85	86	88	89	-	-	-



DURABLE POLYCOTTON MEN'S LONG SLEEVED
EASY CARE POPLIN SHIRT

