

> SM D85

# B&C DNM VISION /MEN



## MEDIUM FIT

Men's DENIM long-sleeved shirt with outstanding details - the ultimate in casual chic for successful living

- DENIM 100% cotton, garment wash finishing
- Straight cut
- Cut-away collar
- Tone-on-tone decorative multistitch lines on the back of the collar
- Tone-on-tone buttons
- Half-hidden button placket, a fashionable detail
- Long sleeves - and for an even more casual look, use the sleeve tabs to roll them up
- Accessory button in antique brass on the left gauntlet giving the shirt its individual look
- Embellishing triple needle topstitched straight yoke at chest and back side
- Horizontal last buttonhole
- Bottom sides reinforced with reverse denim
- Curved bottom hem



- Denim Twill, 100% cotton
- Garment wash
- Denim (6.5 OZ)
- S - M - L - XL - XXL
- 1 pc/pack & 20 pcs/carton

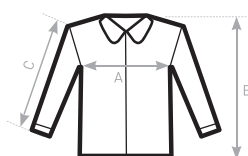


## TIPS & IDEAS

- No pleat on back panel for optimal printing and embroidery
- Wear the collar up to show the unique decoration



**DUO**  
**CONCEPT**  
with B&C DNM Vision /women



## SIZES [cm]

B&C DNM VISION /M. SM D85	XS	S	M	L	XL	XXL	XXXL
A HALF CHEST	-	50	53	56	59	61	-
B CENTER BACK LENGTH	-	72	74	76	78	80	-
C SLEEVE LENGTH	-	63	64,5	66	67,5	69	-

