



MEDIUM FIT

- Long-sleeved Poplin shirt
- Combed cotton/elastane stretch fabric
- Buttons in matching colour
- Fitted
- No pleat on back panel for optimal printing and embroidery
- 2 spare buttons
- 40°C washable

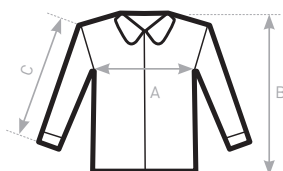


Poplin Stretch

- 97% combed cotton - 3% elastane
- 135 g/m<sup>2</sup> **STRETCH**
- S - M - L - XL - XXL
- 1 pc/pack & 20 pcs/carton



DUO  
CONCEPT  
with B&C Milano /women



SIZES [CM]

| B&C LONDON SM 580 | XS | S  | M    | L  | XL   | XXL | XXXL |
|-------------------|----|----|------|----|------|-----|------|
| A HALF CHEST      | -  | 53 | 56   | 59 | 62   | 65  | -    |
| B BODY LENGTH     | -  | 74 | 75,5 | 77 | 78,5 | 80  | -    |
| C SLEEVE LENGTH   | -  | 67 | 67,5 | 68 | 68,5 | 69  | -    |

