

> JW D15

B&C DNM SUPREMACY /W.

B&C DNM
A DENIM VISION OF B&C



FITTED

Women's iconic & fashionable DENIM bomber jacket

- Outside 100% DENIM cotton, garment wash
- Two front pockets with press-stud
- Front full zip in antique brass, heavy size
- Soft cotton 2x2 rib with elastane at the neck, cuffs and waist
- Lining for a qualitative finish (even when embroidered)
- Inner zip for easy access for decoration



OUT: Denim Twill, 100% cotton
IN: Lining front and back: 65% polyester, 35% cotton
 Lining sleeves: 100% taffeta polyester

OUT: Garment wash

Heavyweight denim (12 OZ)

XS - S - M - L - XL - XXL

1 pc/pack & 20 pcs/carton



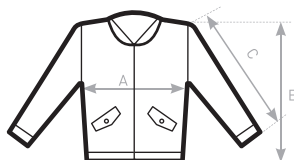
TIPS & IDEAS

- Zip cursor is made to support a promotional pull
- Denim fabric patch inside the jacket, top center back position to support a print



DUO
CONCEPT

with B&C DNM Supremacy /men



SIZES [cm]

B&C DNM SUPREMACY /W. JW D15	XS	S	M	L	XL	XXL	XXXL
A HALF CHEST	48	51	54	57	60	63	-
B CENTER BACK LENGTH	55	57	59	61	63	66	-
C SLEEVE LENGTH	64	65,5	67	68,5	70	71,5	-

