

> JW D11

B&C DNM FRAME /WOMEN

B&C DNM
A DENIM VISION OF B&C



FITTED

Women's iconic & fashionable DENIM trucker jacket

- 100% DENIM cotton, garment wash
- Metallic buttons in antique brass
- Front folding with bartacks to reinforce DNM RAW look
- One front ticket pocket with flap & button with decorative reinforcement stitch
- Single button cuffs
- Two small foldings on back for a feminine look
- Decorative button on waistband at the back
- Contrast stitching



Denim Twill, 100% cotton

Garment wash

Heavyweight denim (12 OZ)

XS - S - M - L - XL - XXL

1 pc/pack & 20 pcs/carton



TIPS & IDEAS

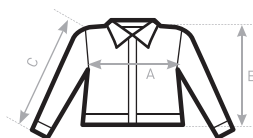
- No lining - easy access for decoration



DUO
CONCEPT

with B&C DNM Frame /men

SIZES [cm]



B&C DNM FRAME /W. JW D11	XS	S	M	L	XL	XXL	XXXL
A HALF CHEST	47	50	53	56	59	62	-
B CENTER BACK LENGTH	50	51,5	53	54,5	56	57,5	-
C SLEEVE LENGTH	60	61,5	63	64,5	66	67,5	-

