

> JM D10

B&C DNM FRAME /MEN



MEDIUM FIT

Men's iconic & fashionable DENIM trucker jacket

- 100% DENIM cotton, garment wash
- Metallic buttons in antique brass
- Front folding with bartacks to reinforce DNM RAW look
- Two side pockets and one chest pocket with visible finish in reverse denim and bartack to simulate pen pocket
- Single button cuffs
- Specific elbow construction
- Decorative button on waistband at the back
- Contrast stitching



Denim Twill, 100% cotton

Garment wash

Heavyweight denim (12 OZ)

S - M - L - XL - XXL - XXXL

1 pc/pack & 20 pcs/carton

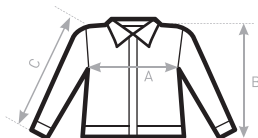


TIPS & IDEAS

- No lining - easy access for decoration



DUO
CONCEPT
with B&C DNM Frame /women



SIZES [cm]

B&C DNM FRAME /M. JM D10	XS	S	M	L	XL	XXL	XXXL
A HALF CHEST	-	50	53	56	59	62	65
B CENTER BACK LENGTH	-	63	65	67	69	71	73
C SLEEVE LENGTH	-	65,5	67	68,5	70	71,5	73

