

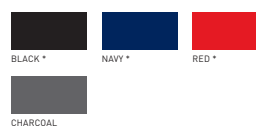
# B&C ICEWALKER+ FU 703



## RAW FLEECEES

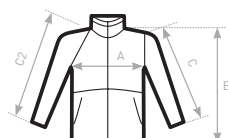


- Tone-on-tone full zip opening with zip pull
- 2 front pockets with zips
- Open hem with elasticated cord, 2 stoppers and easy-to-pull rings



- 100% anti-pilling polyester fleece
- 300 g/m<sup>2</sup>
- XS - S - M - L - XL - XXL - XXXL\*
- 5 pcs/pack & 15 pcs/carton

\* ONLY AVAILABLE IN BLACK, NAVY AND RED



C2= RAGLAN SLEEVE

### SIZES [CM]

B&C ICEWALKER+ FU 703	XS	S	M	L	XL	XXL	XXXL
A HALF CHEST	50	53	56	59	62	65	68
B BODY LENGTH	68	69,5	71	72,5	74	75,5	77
C SLEEVE LENGTH	61,5	62,5	63,5	64,5	65,5	66,5	67,5

